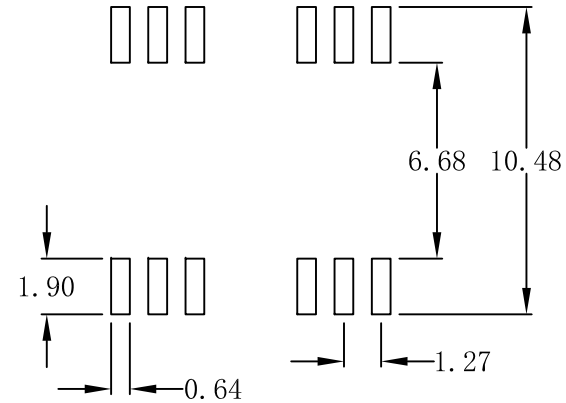
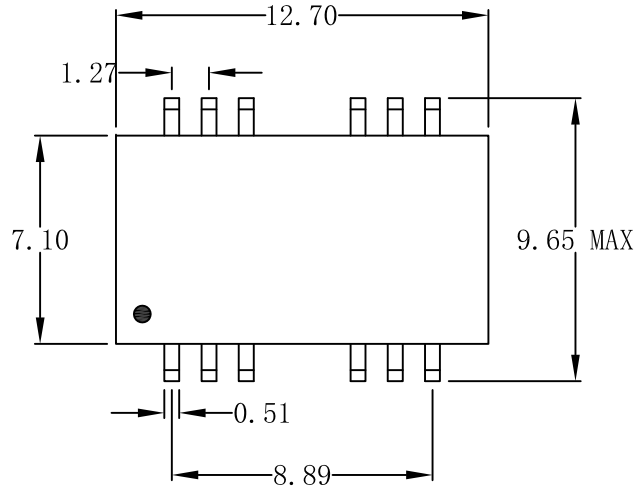
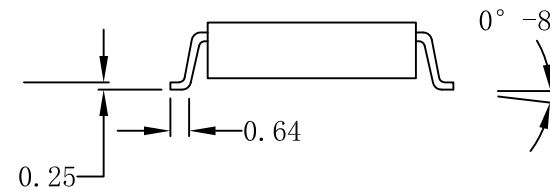
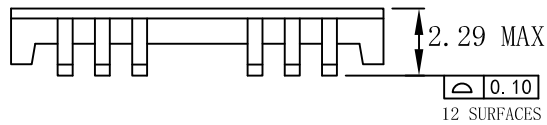


Mechanical :

REV.	ECN NO.	DESCRIPTION	DATE	APPD
A	REL		2013-02-26	



SUGGESTED PAD LAYOUT



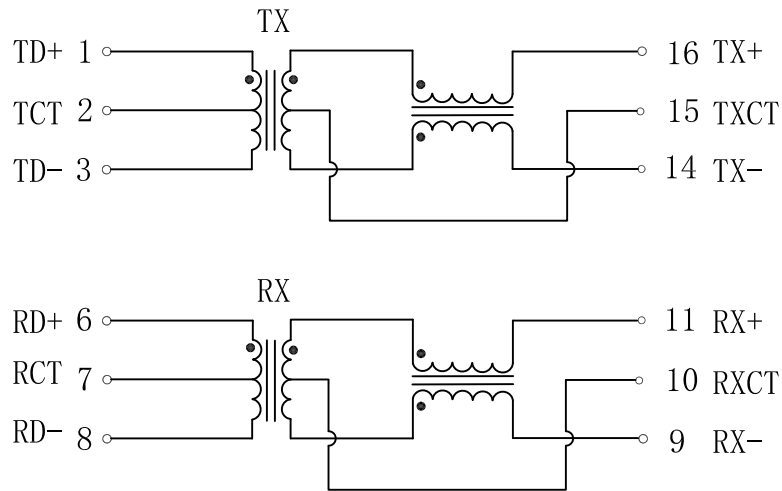
NOTES:

1. Designed to support application, such as SOHO (ADSL modems), LAN-on-Motherboard (LOM), hub and Switches.
2. Meets IEEE 802.3 specification.
3. Maximum reflow temperature is 250°C.

X:X	APPD:			
X:XX ±0.25	CHKD:			
X:XXX	DR:	TITLE: 10/100Base-T Single Port Transformer Modules		
ANGLES ±1°	UNIT: mm	PART NO.: KLK41604NL		
	SCALE: 4/1	SHEET: 1/4	REV: A	DWG NO.:

Schematic:

REV.	ECN NO.	DESCRIPTION	DATE	APPD
A	REL		2013-02-26	



ELECTRICAL SPECIFICATIONS @25°C

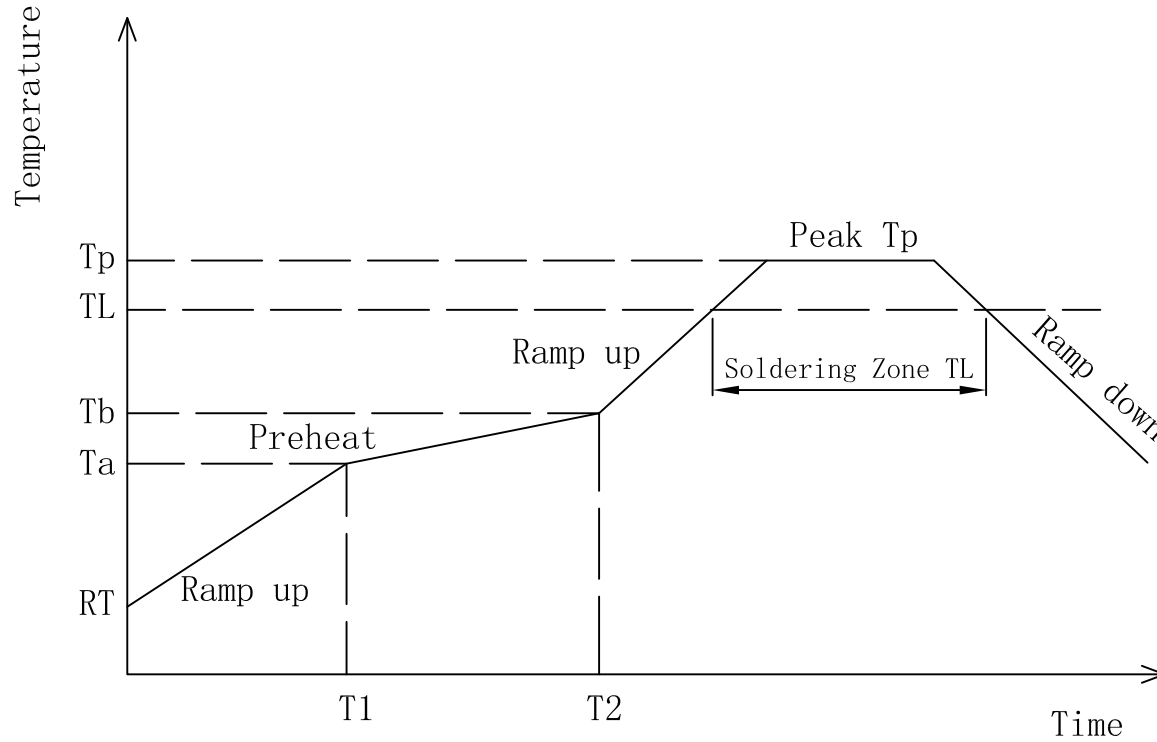
- Turn Ratio ($\pm 3\%$):
TX=1CT:1CT RX=1CT:1CT
- Inductance OCL:
350uH MIN @100KHz 0.1V
- Insertion Loss:
-1.1dB MAX @1-100MHz
- Return Loss:
-16dB MIN @1-30MHz
-12dB MIN @30-60MHz
-10dB MIN @60-100MHz
- Cross talk:
-40dB MIN @1-30MHz
-35dB MIN @30-60MHz
-30dB MIN @60-100MHz
- Common Mode Rejection:
-30dB MIN @1-50MHz
-20dB MIN @50-150MHz
- Hipot Test: 1500Vrms
- Operating Temperature Range: 0°C to 70°C.



X:X	APPD:	
X:XX ± 0.25	CHKD:	
X:XXX	DR:	TITLE: 10/100Base-T Single Port Transformer Modules
ANGLES $\pm 1^\circ$	UNIT: mm	PART NO.: KLK41604NL
	SCALE: 4/1	SHEET: 2/4
	REV: A	DWG NO.:

IR Reflow:

REV.	ECN NO.	DESCRIPTION	DATE	APPD
A	REL		2013-02-26	



- ◆ Preheat:
Temperature (Ta-Tb) : 150-200°C
Time (t1-t2) : 60-180s
- ◆ Holding Temperature: 217°C
Time (TL) : 60-150s
- ◆ Max Temperature (Tp) : 250 (+0/-5°C)
Max Time (Tp) : 30s
- ◆ The average speed: 3°C/S Max
The average cooling speed: 6°C/S Max
- ◆ From 25°C to Products out of the furnace: 6 minutes Max



X:X	APPD:	
X:XX ±0.25	CHKD:	
X:XXX	DR:	TITLE: 10/100Base-T Single Port Transformer Modules
ANGLES ±1°	UNIT: mm	PART NO.: KLK41604NL
	SCALE: 4/1	SHEET: 3/4
	REV: A	DWG NO.: