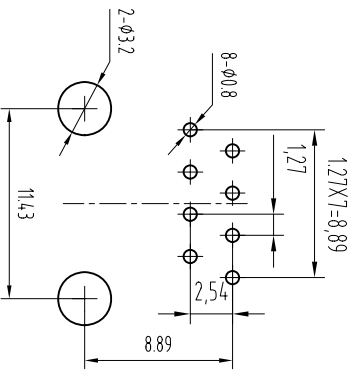
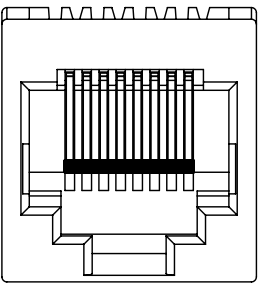
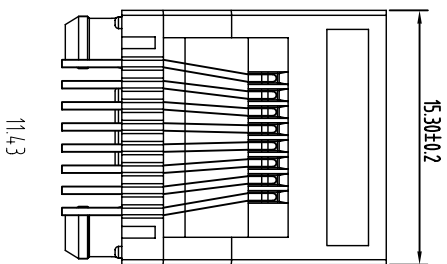
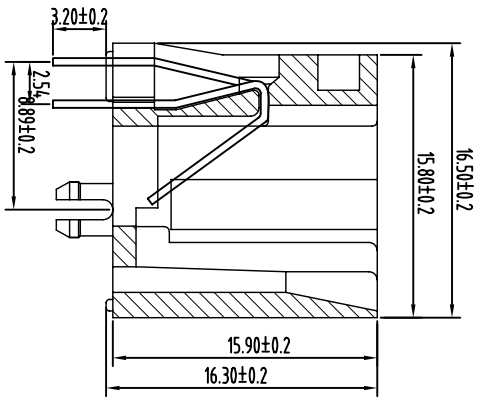


REVISION RECORD			
REV	ECO	DESCRIPTION	DRFT



Component Side Shown

NOTES:

MATERIAL :

- 1:HOUSING MATERIAL
- 2:CONTACT MATERIAL
- 3:PLATING

ELECTRICAL:

- 1.VOLTAGE RATING :125 VAC RMS.
- 2.CURRENT RATING :15 AMP.
- 3.CONTACT RESISTANCE :30 MILLIOMHS MAX.
- 4.INSULATION RESISTANCE :500 MEGOHMS MIN @ 500V DC .
- 5.DIELECTRIC WITHSTANDING RESISTANCE :1000V AC RMS 50HZ .MIN.

MECHANICAL:

- 1.DURRABILITY :750 CYCLES MIN.
- 2.PCB RETENTION PRE-SOLDER :1 LB MIN.

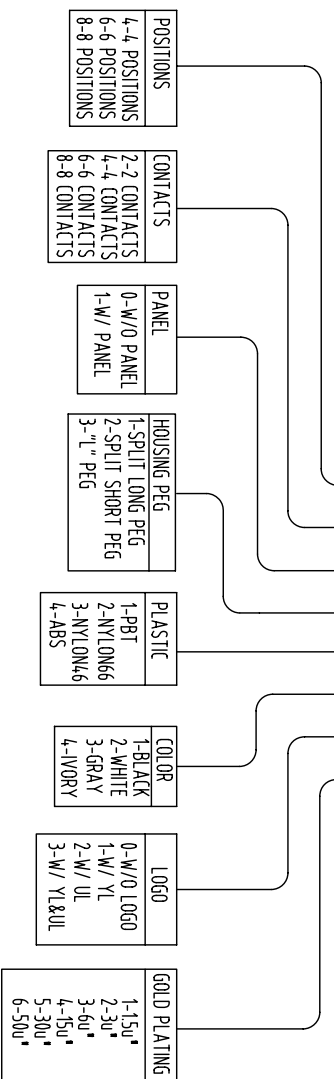
ENVIRONMENTAL:

- 1.STORAGE : -40°~+85°
- 2.OPERATION : 0° C TO 70° C .

PART NUMBER:

52 SERIES TOP ENTRY JACK

Y152A X X-X X X X X X X X



- POSITIONS
4-4 POSITIONS
6-6 POSITIONS
8-8 POSITIONS

- CONTACTS
2-2 CONTACTS
4-4 CONTACTS
6-6 CONTACTS
8-8 CONTACTS

- PANEL
0-W/O PANEL
1-W/ PANEL

- HOUSING PEG
1-SPLIT LONG PEG
2-SPLIT SHORT PEG
3-"L" PEG

- PLASTIC
1-PBT
2-NYLON66
3-NYLON46
4-ABS

- COLOR
1-BLACK
2-WHITE
3-GRAY
4-IVORY

- LOGO
0-W/O LOGO
1-W/ YL
2-W/ UL
3-W/ YL&UL

- GOLD PLATING
1-15u"
2-3u"
3-6u"
4-15u"
5-30u"
6-50u"

DETACHED LISTS			
MM	INCH	DATE	DRFT
TOLERANCES EXCEPT AS NOTED		2008/05/20	CHD
M/M		2009/03/28	MFO
0 ± 0.15	±		DATE
.00 ± 0.075	±		DATE
.000 ± 0.05	±		DATE
ANGLES ± 0.5			
THIRD ANGLE PROJECTION			
MATERIAL:		TITLE	
QTY:		DRAWING NO. Y152ABX	
FINISH:		/PART NO.	
SCALE:		TITLE	
		SHEET X OF Y	
		SIZE REV	
		A3 0	